

# Science Foundation Ireland Snapshot



**Our vision** is to be a global leader in scientific and engineering research, discovery and innovation.

**Our mission** is to progress Ireland's society and economy by supporting the best scientific and engineering research, while building an awareness of the role, impact and opportunities science creates. We believe in the ability of STEM to effect positive change in the world and to drive a sustainable international economy.



# About Science Foundation Ireland

**Science Foundation Ireland is the national foundation for investment in science, technology, engineering and mathematics (STEM) research.**

Science Foundation Ireland funds basic and applied research in the areas of science, technology, engineering and mathematics to promote and assist the development and competitiveness of industry, enterprise and employment in Ireland.

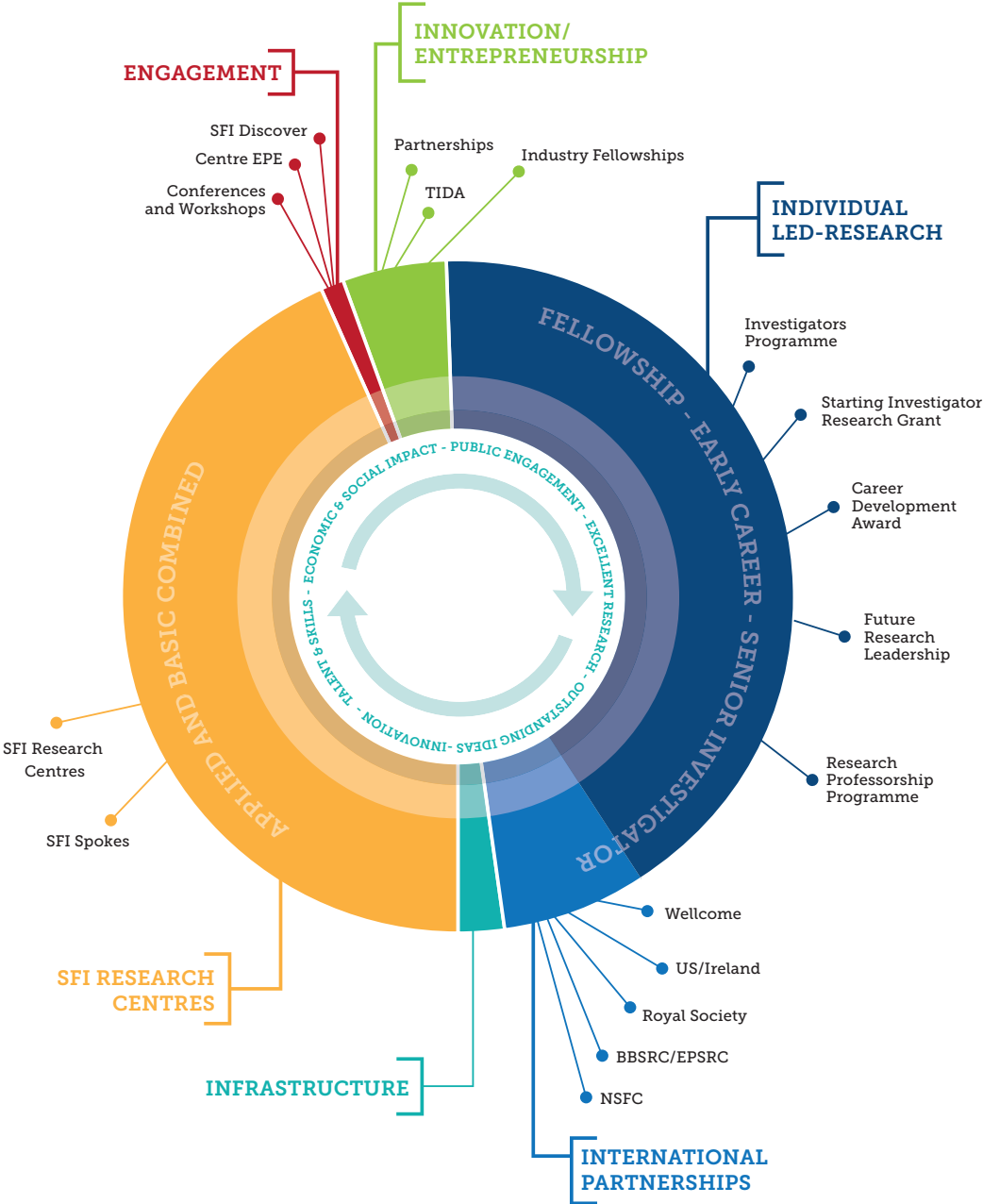
Over recent years, Science Foundation Ireland has transformed the funding of scientific research on a competitive basis in Ireland, supporting innovation and promoting collaboration, talent development, excellence and impact. This has significantly advanced Ireland's reputation for research and innovation internationally and is at the core of future-proofing our knowledge economy.

Science Foundation Ireland has been at the forefront of developing an environment that attracts and supports researchers of international standing, secures high levels of investment from industry and helps to sustain an environment in which the talent and skills agenda can flourish.

All awards are competitively assessed using independent international expert peer review. Science Foundation Ireland funds a diverse and balanced portfolio of programmes from supporting individual researchers across the career spectrum (from early-stage to established highly-esteemed research leaders), to supporting research teams in large-scale world-leading SFI Research Centres.

Science Foundation Ireland offers a range of funding programmes which support scientists and engineers to deliver research excellence as well as economic and societal impact. The majority of funding is committed to basic research projects – excellent research with impact – at Technology Readiness Levels (TRLs) 1 and 2.

# Science Foundation Ireland Portfolio



# SFI Driving Excellent Science

## Ireland is **11th** in global scientific ranking

(from InCites by Clarivate Analytics)

Science Foundation Ireland-funded publications are **2.7** times more likely to be star publications\* than average

\*Star publications are publications in the top 1% most cited papers.

The Irish national average is 1.62%.  
The SFI funding average is 2.67%  
(based on citations by Clarivate Analytics).



## Ireland is:

**1st** in the world for knowledge diffusion

**2nd** for knowledge impact

**5th** for business environment

**5th** for knowledge and technology outputs

**6th** for innovation efficiency

**10th** most innovative country

(Global Innovation Index 2017)

## **2,433** International collaborations



Science Foundation Ireland researchers were involved in **2,433** international collaborations in **66** countries

A total of **4,894** publications were reported in 2017 (17% increase)

**40%** are available in open access repository

## Talent & Skills

**4,524** people working on SFI-supported research projects

Science Foundation Ireland supported **1,451** postgraduate students

29% of PhD and 30% of Postdocs were employed by industry as their first job

Number of female to male award holders has increased to **28%**

**1,169** international reviewers from **623** institutions in **40** countries took part in SFI merit review processes

## Education & Public Engagement

**593** primary schools received SFI Discover Primary Science and Maths Awards

Science Week reached **250,000+** people across Ireland

**41** projects supported by the SFI Discover Programme (€4.4 million)

**1,600** Smart Futures volunteers engaged 120,000+ students, providing STEM careers advice

Public engagement activities carried out by SFI-funded researchers increased **60%** in 2017


# Innovation Driving Economic Impact

**€173 million**

spend across SFI programmes generates an additional

**€116 million** non-exchequer funding, which includes:

**€70.4 million** in EU funding

 **€32 million** in business and enterprise funding

**Over €10 million** from other international funding sources

## Winning in Europe

**51** ERC awards have been secured by Irish-based researchers in 2017

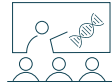
**31** of these were won by SFI-awardees

SFI Research Centres have won approximately **€100 million** competitive H2020 funding, which equates to more than 50% of funding to Irish Higher Education Institutes.

**787** conferences and workshops, with 10,933 international delegates

Projected local economic value to Ireland: **€13.8 million**

(up from €10.5 million in 2016)



**32** SFI-funded researchers in **8 Institutes of Technology** are collaborators in SFI Research Centres



There are **23 active SFI awards** with the Institutes of Technology, with a value of **€7 million**

SFI award holders:



spun out 10 companies

(up from six in 2016)

 **+67%**

were granted 36 patents

(up from 22 in 2016)

 **+64%**

# SFI Driving Regional Development



Science Foundation Ireland directly and indirectly supports

## 31,200

jobs in Ireland



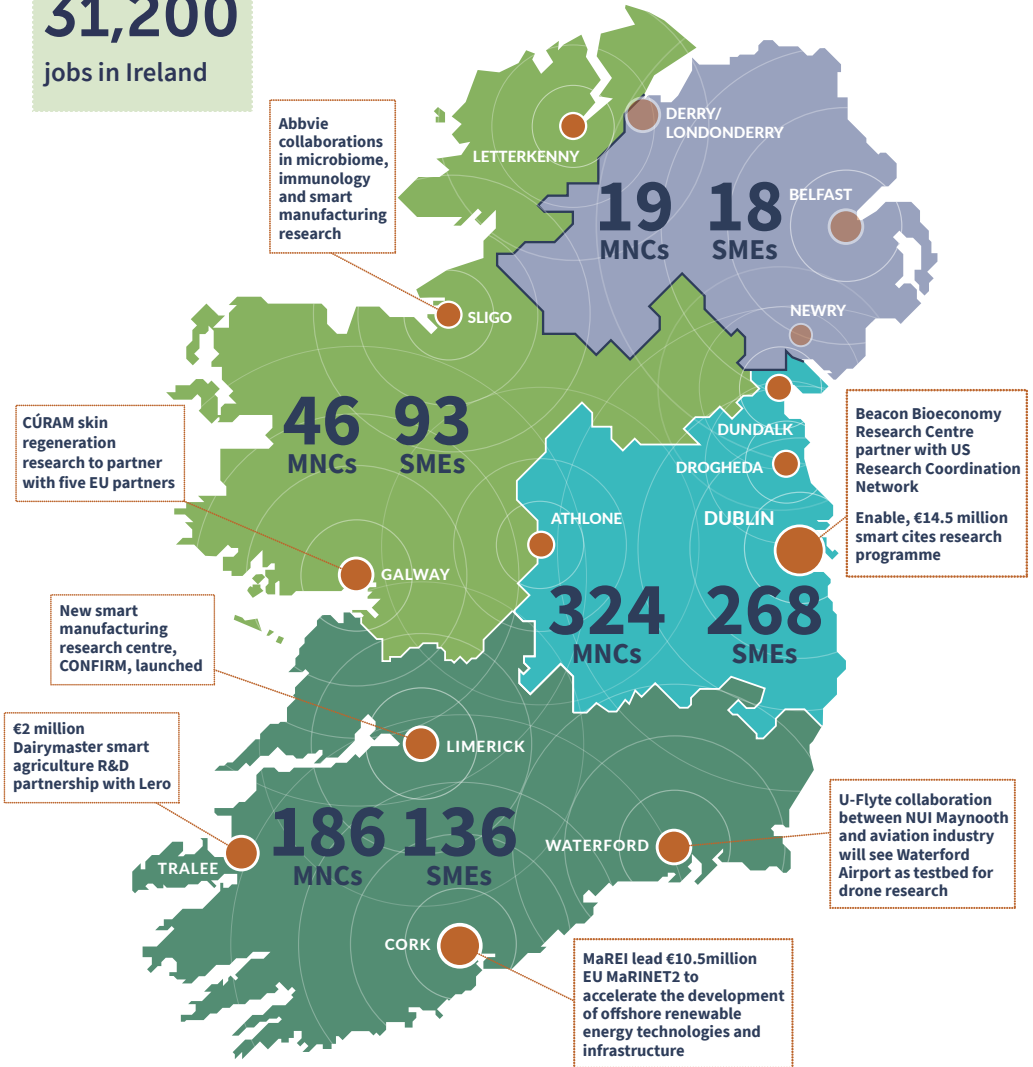
Industry Collaborations

**1,521** industry collaborations supported

**911** collaborations with **463** MNCs

**610** collaborations with **464** SMEs

## SFI-INDUSTRY COLLABORATIONS



# SFI Research Centres

World-Leading Centres of Scale, Excellence and Impact

Excellent  
Science

Industry  
Collaboration



Software  
Pharma  
Nanotechnology  
MEDICAL DEVICES



Applied Geosciences  
Digital Content

Industry Nano €428  
commitment million  
of €228 million from SFI

Confirm  
Smart Manufacturing



MANUFACTURING Telecoms  
PERINATAL Bio Economy  
RESEARCH Energy

CONNECT  
Networks of the Future



Functional Foods  
FOOD FOR HEALTH

BIG DATA | Marine  
Renewable Energy



International  
Engagement

Skills



# SFI Research Centres

## Excellent Science

**5,443**   
Journal Publications

**3,347**  
Conference Publications

**74**  
Coordination of Major EU Research Projects

**23**   
ERC Awards



## Talent & Skills

**587**   
PhD Graduates

**33%**   
of trainee departures with industry as first destination


**92**   
MSc/MEng Graduates



## Economic Impact

**1,521**   
Collaborations with industry

**20**  
Spinout Companies

**€173m**   
Funding from non-exchequer sources

**248**  
Enterprise Ireland Commercialisation Awards

**132**  
Licence Agreements

**€42m**  
Cash Received from Industry

# Partnerships

with international and national funders



# What Science Foundation Ireland does:

- Makes **grants** to Higher Education Institutes (HEIs) in Ireland
- Based on competitive, international merit review for scientific **excellence** and **impact**
- Trains **people**
- Builds **infrastructure**
- Produces **scientific results** and technology (Research Output)
- Transfer of the **research output** to existing and new companies for **economic and societal impact**
- Supply of appropriately trained people along the entire **science and technology pipeline**
- **Significant industrial collaboration** attracting, anchoring and starting companies
- **Leverages** other research funding e.g. Industrial / EU / Charitable / Philanthropic / International
- Fosters high levels of **collaboration** between academia, industry, charity, disciplines, sectors, institutions, people and countries
- Operates in an **open, agile** and **engaged** mode with a willingness to **seize** new opportunities
- Engages the **public** to **grow scientific literacy** and citizenship

**We believe in the ability of science, technology, engineering and maths to effect positive change in the world and drive a sustainable economy.**

SCIENCE FOUNDATION IRELAND

**#Believe  
InScience**

[www.sfi.ie](http://www.sfi.ie)

 [@scienceirel](https://twitter.com/scienceirel)

Science Foundation Ireland  
Wilton Park House  
Wilton Place  
Dublin 2  
Ireland

t: + 353 1 607 3200

e: [info@sfi.ie](mailto:info@sfi.ie)

w: [www.sfi.ie](http://www.sfi.ie)

 [@scienceirel](https://twitter.com/scienceirel)

