



Science Foundation Ireland  
**Brand Guidelines**

# Contents

<b>Introduction</b>	<b>3</b>	<b>Colour</b>	<b>10</b>	<b>Email Signature</b>	<b>23</b>
<b>Versions of the logo</b>	<b>4</b>	> Main colours	10	<b>Stationery</b>	<b>24</b>
> Master logo	4	> Secondary colour palette	10	> A4 letter	24
> Irish language logo	4	<b>Guidelines for documents</b>	<b>12</b>	> Compliment slip	25
> Dual language landscape	4	> Cover design template	13	> Envelopes	25
> Dual language portrait	4	> A4 cover examples	14	> Banner and poster examples	26
<b>Programme logos</b>	<b>5</b>	> Leaflet examples	15	<b>Co-branding</b>	<b>27</b>
<b>Using the logo</b>	<b>6</b>	> A4 documents (1 column)	16		
> Minimum size	6	> A4 documents (2 column)	17		
> Clearance zone	6	> A5 documents	18		
> Incorrect uses	7	> Layout tips	19		
<b>Acknowledging Funders</b>	<b>8</b>	<b>Document templates for internal use</b>	<b>20</b>		
<b>Fonts</b>	<b>9</b>	> MS Word templates	21		
		> Powerpoint slides	22		

This identity manual has been produced to assist organisations in correct usage and application of the Science Foundation Ireland logo. Adhering to these guidelines will ensure consistency throughout all visual communications within the organisation and from other stakeholders.

This guide provides details of the updated identity, the individual logos that can be applied to Science Foundation Ireland communications materials, the corporate colours and the suggested supporting fonts.

Each of the individual logos have been created in a series of formats suitable for all communication's environments including .eps and .jpg. Only the logos specified in this guide should be used and must not be amended or distorted in any way.



# Versions of the Science Foundation Ireland logo available

Master logo



SFI\_logo\_master\_CMYK.eps



SFI\_logo\_master\_Black.eps



SFI\_logo\_master\_white.eps

Irish language logo



SFI\_logo\_irish\_CMYK.eps



SFI\_logo\_irish\_Black.eps



SFI\_logo\_irish\_white.eps

Dual language (Landscape)



SFI\_logo\_dual1\_CMYK.eps



SFI\_logo\_dual1\_Black.eps



SFI\_logo\_dual1\_white.eps

Dual language (Portrait)



SFI\_logo\_dual2\_CMYK.eps



SFI\_logo\_dual2\_Black.eps



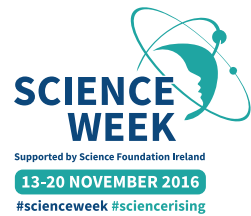
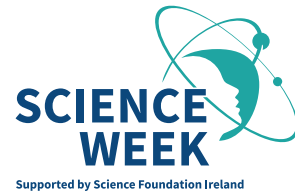
SFI\_logo\_dual2\_white.eps

# Science Foundation Ireland programmes

Smart Futures



Science Week



Discover Primary Science and Maths



SFI Discover (no longer in use)



# Using the Science Foundation Ireland logo

## Minimum size



The logo with full title should not be reproduced smaller than 40mm wide.

## Clearance zone



To help maintain the logo's visibility, we have created a protective clear zone to keep it apart from other elements. Use the width of the 's' to measure the minimum 'breathing' space for the logo.



## Below minimum size

If a smaller reproduction of the logo is required (e.g. pen, tie pin) use the small version logo which can be reduced down to 7mm wide. Small branding of this nature must be pre approved by Science Foundation Ireland.

### Incorrect use of the Science Foundation Ireland logo

The following are some examples of what not to do with the logo



**DO NOT** use elements from the logo in isolation.



**DO NOT** distort, skew, stretch or change the colour of the logo.



**DO NOT** use effects or drop shadows on the logo.



**DO NOT** convert the colour logo to greyscale. Use the black version.



**DO NOT** use the logo on detailed or patterned backgrounds.

If the logo is being placed on an image or colour, please use the correct version of the logo in a suitable position to ensure it is clear and legible.

If in doubt see page 11, 'Guidelines for documents', for more information on the holding shape

# Acknowledging Funders

All SFI Research Centres were funded by the European Regional Development Fund (ERDF) and the European Structural and Investment Funds (ESIF) from 2014-2020 and it is mandatory that their logos be included on all print and digital collateral pertaining to the funding period 2014-2020.

Since the beginning of 2021, the obligation to acknowledge the ERDF and ESIF funding no longer exists. However, beneficiaries of the funding must retain evidence of compliance with these guidelines for potential future audit purposes until such time as the Regional Programme 2014-2020 is deemed closed by the European Commission.

See logos below for reference:



Retained evidence can include but is not limited to: the use of the ERDF funding logos on press releases, website /digital content and copies of marketing publications (leaflets, newsletters, promotional materials), presentations etc. All supporting documents related to these activities (such as invoices, public procurement, contracts, etc.) must also be made available. The documented evidence can be either original copies or electronic versions. For documents stored electronically, the computer systems used must meet adequate security standards to ensure that the documents held comply with national legal requirements and can be relied on for audit purposes.

## Branding Lock-ups

The SFI 'A World-leading' lock-up is to be used by all SFI Research Centres, in conjunction with host and partner institution ribbons. As the branding is clearly visible in the lock-up there is no further requirement to acknowledge SFI as a funder in a separate tab.





# Fonts

## Internally produced documents

### Calibri

Please use Calibri for internally produced documents and presentations (word, Powerpoint, email)

## Externally produced documents

### Source Sans Pro

For body copy and subheadings we use Source Sans Pro. This font is an open source font and freely available for both PC and Apple platforms. It is available in many weights. This font should be used in all Science Foundation Ireland publications, with the exception of word and powerpoint templates where Calibri is used.

### Museo Slab 700

This font is distinctive and recognisable with letterforms that will complement the functionality of Source Sans Pro.

Science Foundation Ireland uses Museo Slab 700 for all big information ie: headlines, chapter heads, main titles and taglines.

Museo Slab 700 is available for download from all the main type foundries.

Source Sans Pro

Source Sans Pro Light

ABCDEFGH123  
 abcdefghijklmnopqrstuvwxyz!  
 @£\$%^&\*()\_+>?

Source Sans Pro Regular

ABCDEFGH123  
 abcdefghijklmnopqrstuvwxyz!  
 @£\$%^&\*()\_+>?

Source Sans Pro Regular

ABCDEFGH123  
 abcdefghijklmnopqrstuvwxyz!  
 @£\$%^&\*()\_+>?

Source Sans Pro Semi bold

ABCDEFGH123  
 abcdefghijklmnopqrstuvwxyz!  
 @£\$%^&\*()\_+>?

Source Sans Pro Bold

ABCDEFGH123  
 abcdefghijklmnopqrstuvwxyz!  
 @£\$%^&\*()\_+>?

Calibri Regular

ABCDEFGH123  
 abcdefghijklmnopqrstuvwxyz!  
 @£\$%^&\*()\_+>?

Calibri Regular italic

ABCDEFGH123  
 abcdefghijklmnopqrstuvwxyz!  
 @£\$%^&\*()\_+>?

Calibri Bold

ABCDEFGH123  
 abcdefghijklmnopqrstuvwxyz!  
 @£\$%^&\*()\_+>?

Calibri

Museo Slab

Museo Slab 500

ABCDEFGH123  
 abcdefghijklmnopqrstuvwxyz!  
 @£\$%^&\*()\_+>?

Museo Slab 700

ABCDEFGH123  
 abcdefghijklmnopqrstuvwxyz!  
 @£\$%^&\*()\_+>?

# Primary Brand Colours

The core colours of the Science Foundation Ireland identity are Pantone 326 (Teal) and Pantone 541 (Navy). The colours shown here are for reference ONLY and printed versions of this guide must not be used to colour match.



## Teal

**Pantone 326**

**CMYK**

C 86  
M 0  
Y 42  
K 0

**SCREEN**

R 0  
G 177  
B 170



## Dark Blue

**Pantone 541**

**CMYK**

C 100  
M 57  
Y 0  
K 38

**SCREEN**

R 0  
G 70  
B 127

## Secondary colours

A number of secondary colours have been selected to augment the identity.

NOTE  
Examples of these colours in use are on the following page.



**Pantone 240C**

**CMYK**

C 20  
M 100  
Y 0  
K 0



**Pantone 380C**

**CMYK**

C 26  
M 0  
Y 100  
K 0



**Pantone 5275C**

**CMYK**

C 49  
M 48  
Y 10  
K 24



**Pantone 7541C**

**CMYK**

C 9  
M 6  
Y 6  
K 0



**Pantone 646C**

**CMYK**

C 66  
M 32  
Y 0  
K 11



**Pantone Warm grey 2C**

**CMYK**

C 0  
M 6  
Y 9  
K 15





TABLE		
Set 1	11	
Set 2	22	
Set 3	33	

These secondary colours are to be used sparingly.

**The primary brand colours on white are part of our look**

The secondary colours can be used to highlight, emphasise and breakup information



TABLE		
Set 1	11	
Set 2	22	
Set 3	33	

Do not use the secondary colours as a main solid in publications

# Guidelines for documents

Cover design template	13
A4 cover examples	14
Leaflet examples	15
A4 documents (1 column)	16
A4 documents (2 column)	17
A5 documents	18
Layout tips	19



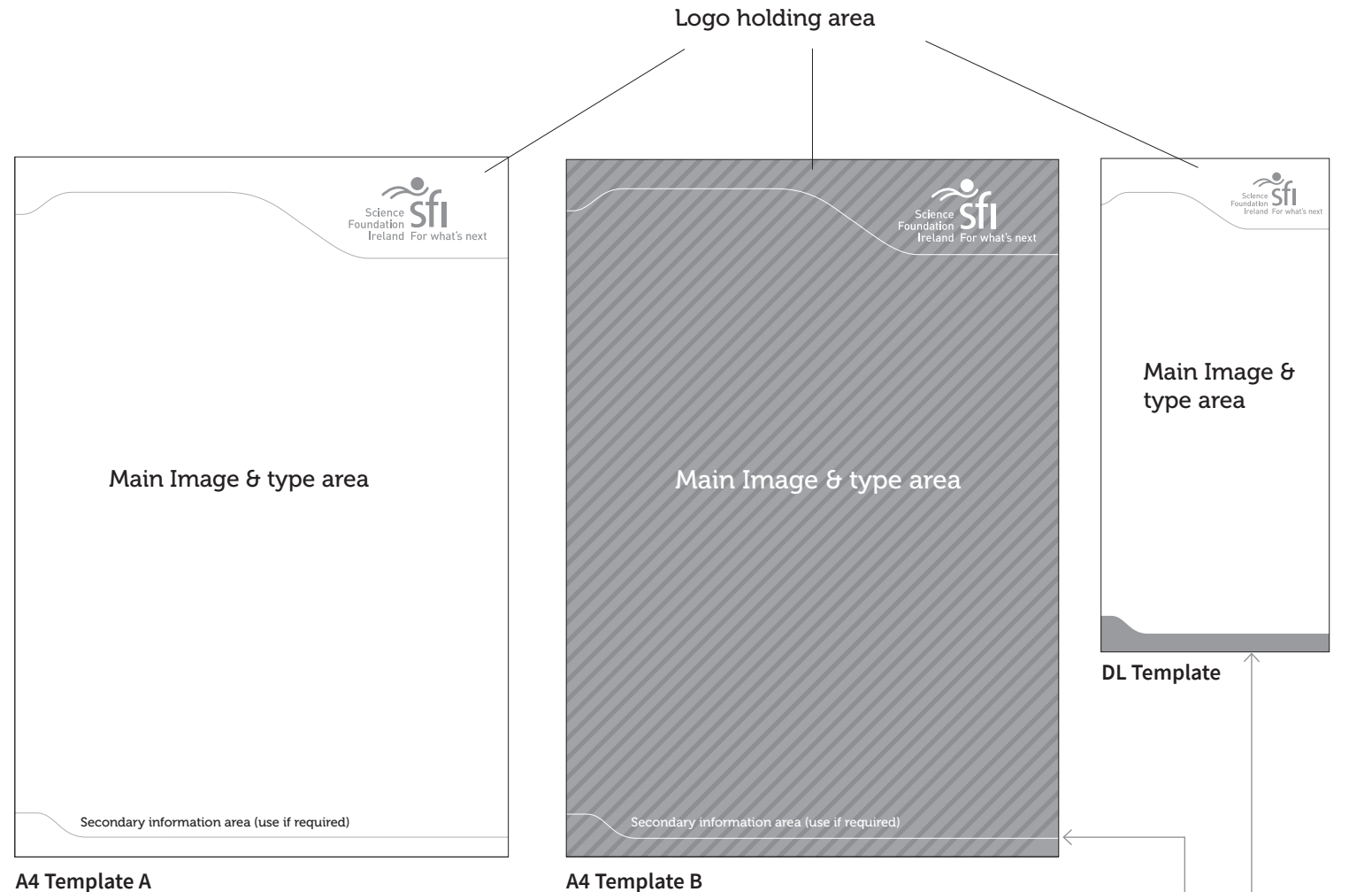
## Cover Design

This is a flexible template that can accommodate different design treatments while maintaining a visual link between our documents.

The diagram opposite shows the curved line we use to hold the logo which also creates a visual link between documents.

The secondary shape at the bottom can be used to hold information such as date of publication, etc.

The following pages show examples of these templates in use.

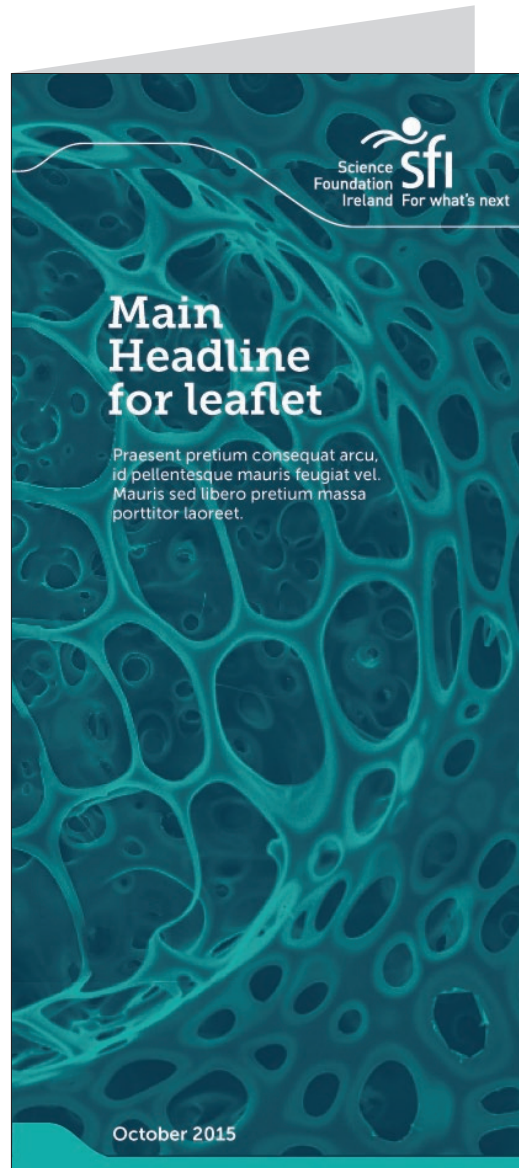


**Note:** The secondary shape at the base of documents can be a line or a solid, depending on the requirement.

A4 Cover Design examples



DL leaflet examples



## Example 1: A4 single column layout

### Main heading

Museo Slab 700 30/32pt\*.

Use a mixture of Dark Blue or Teal to emphasise words or create a visually interesting heading.

\* Reduce size to 25/27pt for A5

### Sub headings A

Museo Slab 700 11/12.5pt ranged left

2mm space before and after

Colour – Teal

### Sub headings B

Source Sans Semibold 10/12.5pt ranged left

2mm space after

Colour – Navy

### Body copy

Source Sans Regular 9.5/12pt ranged left

2mm space after

Colour – Black

### Bullets

Source Sans Regular 9.5/12pt ranged left

2mm space after; 5mm indent

Colour – Black

Use Teal Chevron bullet symbol

### Introductory paragraphs

Source Sans Regular 13/15pt range left

5mm space after

Colour – Navy

Underline & Overline .75mm – 20% Black

### Text pull

Museo Slab 14/16pt range left

Colour – Teal

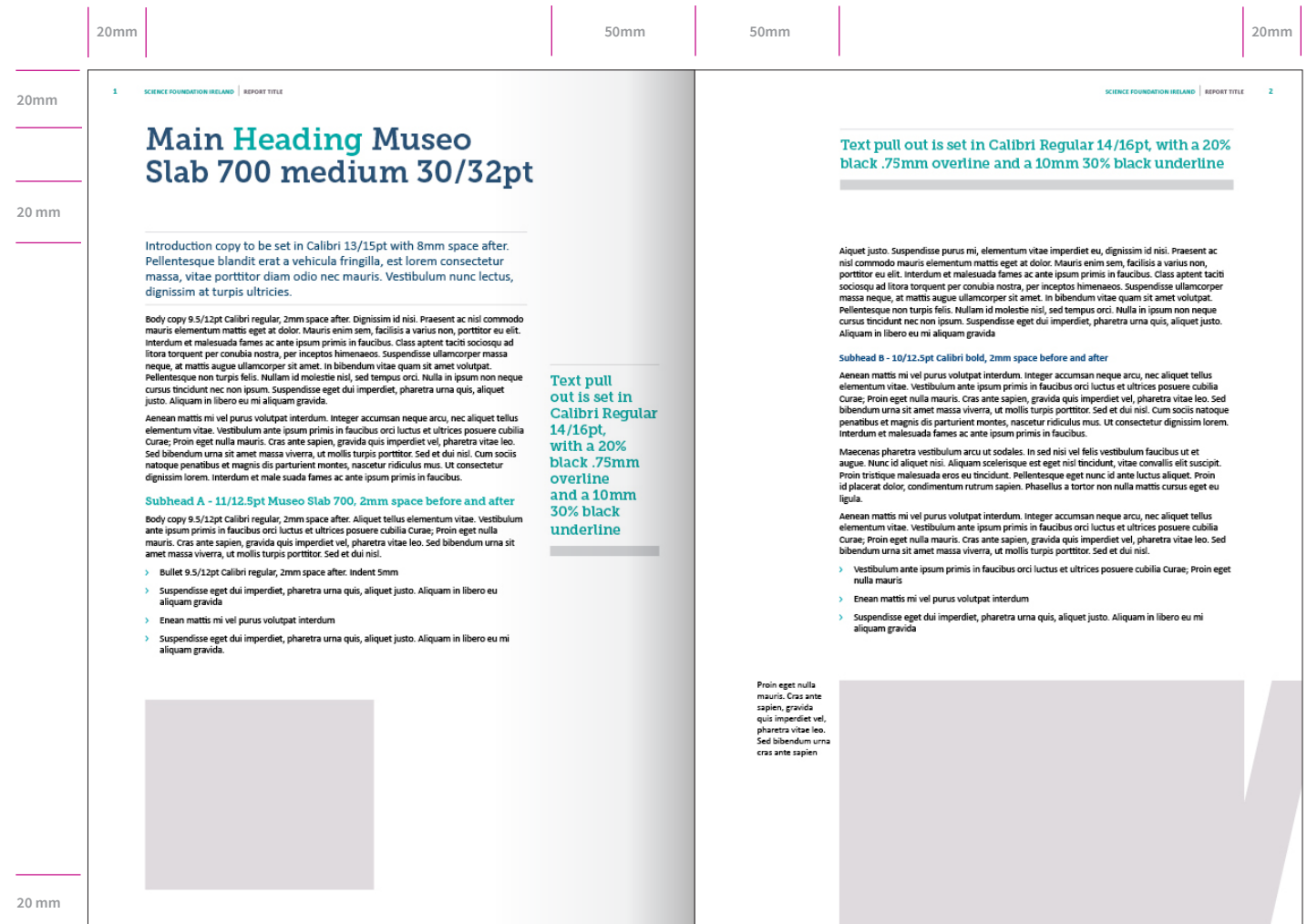
Overline – 20% Black, .75mm

Underline – 30% Black, 10mm

### Captions

Source Sans Regular 9/11pt range left

Colour – Black





## Example 2: A4 two column layout

### Main heading

Museo Slab 700 30/32pt\*.

Use a mixture of Dark blue or Teal to emphasise words or create a visually interesting heading.

\* Reduce size to 25/27pt for A5

### Sub headings A

Museo Slab 700 11/12.5pt ranged left

2mm space before and after

Colour – Teal

### Sub headings B

Source Sans Semibold 10/12.5pt ranged left

2mm space after

Colour – Dark Blue

### Body copy

Source Sans Regular 9.5/12pt ranged left

2mm space after

Colour – Black

### Bullets

Source Sans Regular 9.5/12pt ranged left

2mm space after; 5mm indent

Colour – Black

Use Teal Chevron bullet symbol

### Introductory paragraphs

Source Sans Regular 13/15pt range left

5mm space after

Colour – Dark Blue

Underline & Overline .75mm – 20% Black

### Text pull

Museo Slab 14/16pt range left

Colour – Dark Blue

Overline – 20% Black, .75mm

Underline – 30% Black, 10mm

### Captions

Source Sans Regular 9/11pt range left

Colour – Black



## Example 3: A5 layout

### Main heading

Museo Slab 700 25/27pt\*.

Use a mixture of the Dark blue or Teal to emphasise words or create a visually interesting heading.

### Sub headings A

Museo Slab 700 11/12.5pt ranged left

2mm space before and after

Colour – Teal

### Sub headings B

Source Sans Semibold 10/12.5pt ranged left

2mm space after

Colour – Dark Blue

### Body copy

Source Sans Regular 9.5/12pt ranged left

2mm space after

Colour – Black

### Bullets

Source Sans Regular 9.5/12pt ranged left

2mm space after; 5mm indent

Colour – Black

Use Teal Chevron bullet symbol

### Introductory paragraphs

Source Sans Regular 13/15pt range left

5mm space after

Colour – Dark Blue

Underline & Overline .75mm – 20% Black

### Text pull

Museo Slab 14/16pt range left

Colour – Teal

Overline – 20% Black, .75mm

Underline – 30% Black, 10mm

### Captions

Source Sans Regular 9/11pt range left

Colour – Black



## Example 4: Useful layout tips

### Tips on breaking up text

- Use solid colour to highlight or isolate information. These solids should be used sparingly to maintain the impact.
- If appropriate, use interesting facts and numbers graphically to break up long passages of text.
- Use interesting imagery that promotes science as an interesting career. Only use licensed or Science Foundation Ireland owned photography. **Never use random images from internet sites.**
- Use text pull-outs in the surrounding margins to highlight text.
- Leave naturally occurring white space between graphics and blocks of text to avoid a cluttered layout.

## Highlights

Aliquet justo. Suspendisse purus mi, elementum vitae imperdiet eu, dignissim id nisi. Praesent ac nisl commodo mauris elementum mattis eget et dolor. Mauris mattis sem, facilisis a varius non, porttitor eu elit. Interdum et malesuada fames ac ante ipsum primis in faucibus. Class aptent taciti sociosque ad litora torquent per conubia nostra, per inceptos himenaeos. Suspendisse ullamcorper massa neque, at mattis augue ullamcorper sit amet. In bibendum vitae quam sit amet volutpat. Pellentesque non turpis felis. Nullam id molestie nisi, sed tempus orci. Nulla in ipsum non neque cursus tincidunt nec non ipsum. Suspendisse eget dui imperdiet, pharetra urna quis, aliquet justo. Aliquam in libero eu mi aliquam gravida.

**Subhead A - 11/12.5pt Museo Slab 700, 2mm space before & after**

Aenean mattis mi vel purus volutpat interdum. Integer accumsan neque arcu, nec aliquet tellus elementum vitae. Vestibulum ante ipsum primis in faucibus orci luctus et ultrices posuere cubilia Curae; Proin eget nulla mauris.

- > Vestibulum ante ipsum primis in faucibus orci luctus et ultrices posuere cubilia Curae; Proin eget nulla mauris.
- > Enean mattis mi vel purus volutpat interdum
- > Suspendisse eget dui imperdiet, pharetra urna quis, aliquet justo. Aliquam in libero eu mi aliquam gravid

**Subhead A - 11/12.5pt Museo Slab 700, 2mm space before & after**

Aenean mattis mi vel purus volutpat interdum. Integer accumsan neque arcu, nec aliquet tellus elementum vitae. Vestibulum ante ipsum primis in faucibus orci luctus et ultrices posuere cubilia Curae; Proin eget nulla mauris. Cras ante sapien, gravida quis imperdiet vel, pharetra vitae leo. Sed bibendum urna sit amet massa viverra, ut mollis turpis porttitor.

SFI researchers published 3,996 scientific papers, 40% are co-authored with international based researchers. We have a co-author from industry.

1 SCIENCE FOUNDATION IRELAND | REPORT TITLE
SCIENCE FOUNDATION IRELAND | REPORT TITLE 2

# Main Heading Museo Slab 700 medium 30/32pt

Introduction copy to be set in Calibri 13/15pt with 8mm space after. Pellentesque blandit erat a vehicula tringilla, est lorem consectetur massa, vitae porttitor diam odio nec, mauris. Vestibulum nunc. Lectus, dignissim et turpis ultrices.

Body copy 9.5/12pt Calibri regular, 2mm space after. Dignissim id nisi. Praesent ac nisl commodo mauris elementum mattis eget et dolor. Mauris enim sem, facilisis a varius non, porttitor eu elit. Interdum et malesuada fames ac ante ipsum primis in faucibus. Class aptent taciti sociosque ad litora torquent per conubia nostra, per inceptos himenaeos. Suspendisse ullamcorper massa neque, at mattis augue ullamcorper sit amet. In bibendum vitae quam sit amet volutpat. Pellentesque non turpis felis. Nullam id molestie nisi, sed tempus orci. Nulla in ipsum non neque cursus tincidunt nec non ipsum. Suspendisse eget dui imperdiet, pharetra urna quis, aliquet justo. Aliquam in libero eu mi aliquam gravida.

Aenean mattis mi vel purus volutpat interdum. Integer accumsan neque arcu, nec aliquet tellus elementum vitae. Vestibulum ante ipsum primis in faucibus orci luctus et ultrices posuere cubilia Curae; Proin eget nulla mauris. Cras ante sapien, gravida quis imperdiet vel, pharetra vitae leo. Sed bibendum urna sit amet massa viverra, ut mollis turpis porttitor. Sed et dui nisi. Aliquam in libero eu mi aliquam gravida.

Subhead B - 10/12.5pt Calibri bold, 2mm space before and after

Aenean mattis mi vel purus volutpat interdum. Integer accumsan neque arcu, nec aliquet tellus elementum vitae. Vestibulum ante ipsum primis in faucibus orci luctus et ultrices posuere cubilia Curae; Proin eget nulla mauris. Cras ante sapien, gravida quis imperdiet vel, pharetra vitae leo. Sed bibendum urna sit amet massa viverra, ut mollis turpis porttitor. Sed et dui nisi. Cum sociis natoque penatibus et magnis dis parturient montes, nascetur ridiculus mus. Ut consectetur dignissim lorem. Interdum et male suada fames ac ante ipsum primis in faucibus.

Subhead A - 11/12.5pt Museo Slab 700, 2mm space before and after

Body copy 9.5/12pt Calibri regular, 2mm space after. Aliquet tellus elementum vitae. Vestibulum ante ipsum primis in faucibus orci luctus et ultrices posuere cubilia Curae; Proin eget nulla mauris. Cras ante sapien, gravida quis imperdiet vel, pharetra vitae leo. Sed bibendum urna sit amet massa viverra, ut mollis turpis porttitor. Sed et dui nisi.

- > Bullet 9.5/12pt Calibri regular, 2mm space after. Indent 5mm
- > Suspendisse eget dui imperdiet, pharetra urna quis, aliquet justo. Aliquam in libero eu mi aliquam gravida
- > Enean mattis mi vel purus volutpat interdum
- > Suspendisse eget dui imperdiet, pharetra urna quis, aliquet justo. Aliquam in libero eu mi aliquam

Text pull out is set in Calibri Regular 14/16pt, with a 20% black .75mm overtime and a 10mm 30% black underline


---

606

individuals left SFI funded teams.

65%

of those who left remained in Ireland.



Proin eget nulla mauris. Cras ante sapien, gravida quis imperdiet vel, pharetra vitae leo. Sed bibendum urna sit amet massa viverra, ut mollis turpis porttitor.

# Internal documents

## Word

Science Foundation Ireland has developed a suite of Word templates for internal documents and communications which are available for circulation.

## Fonts

For documents produced internally we use the font Calibri.

## Templates

To ensure consistency throughout our documents master templates must be used. The general specifications are as follows:

### Main titles and headings

Calibri Bold 18pt ranged left  
 – white reversed out of Teal  
 Single Line spacing

### Subheads 1

Calibri Bold 16pt ranged left - Black  
 Single Line spacing

### Subheads 2

Calibri Bold 11pt ranged left - Black  
 Single Line spacing; Left indent .2cm

### Body text

Calibri 11pt ranged left – Black  
 Single Line spacing; space after 6mm  
 Left indent .2cm

### Sign off/signature text

Calibri 11pt ranged left – Black  
 Single line Spacing

### Highlight of instructional text

Calibri Italic 11pt ranged left – Red

### Electronic signature

Signatures of personnel to be used only with strict authorisation.

## Board Meeting document

The template for a Board Meeting document features a teal header with the SFI logo and the text 'Science Foundation Ireland For what's next'. Below the header is a teal box containing the title 'SFI Board Meeting #/YYYY DD/MM/YYYY'. This is followed by a section for 'Title 1' and 'Title 2'. A table lists 'Agenda Item:' with a '#' column. Below this are fields for 'Authors: Names', 'Sponsor(s): Names', and 'Decision Sought: For information / Noting / Discussion / Approval [Delete as appropriate]'. The 'Executive Summary' section contains placeholder text. The 'Background' section also contains placeholder text. 'Subsequent headings' are followed by more placeholder text. A teal box highlights the 'Recommendation:' section, which states 'The Board is requested to approve / note / consider ...'. Below this is a 'Signed:' field and a 'Director's Name: Name' field.

## Memorandum document

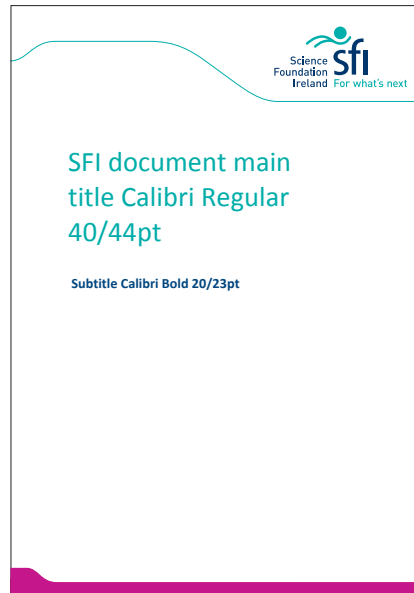
The template for a Memorandum document features a teal header with the SFI logo and the text 'Science Foundation Ireland For what's next'. Below the header is a teal box containing the title 'Memorandum to Executive'. This is followed by fields for 'To: SFI Executive', 'From:', 'Subject:', 'Decision Sought: For Approval/Noting/Discussion [delete as appropriate]', and 'Date:'. Below this is the 'Outline of Issue/Background' section, which includes a line for 'I / We / ...' and a line for 'The Executive Committee is requested to approve / note / consider...'. A teal box highlights the 'Signed:' section, which includes fields for '[Name] [Position]', a note in italics: '[If the above person is not a member of the Executive Committee, this memo should also be signed by the above person's Director]', and a 'Director:' field with sub-fields for '[Name] [Position]'.

# Word documents

Science Foundation Ireland has developed a suite of Word templates for internal documents and communications which are available for circulation.

To ensure consistency throughout our documents, master templates should be used. The general specifications are as follows:

## Word template cover designs

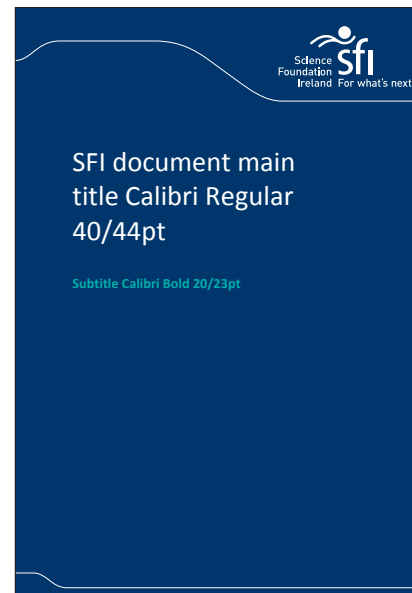
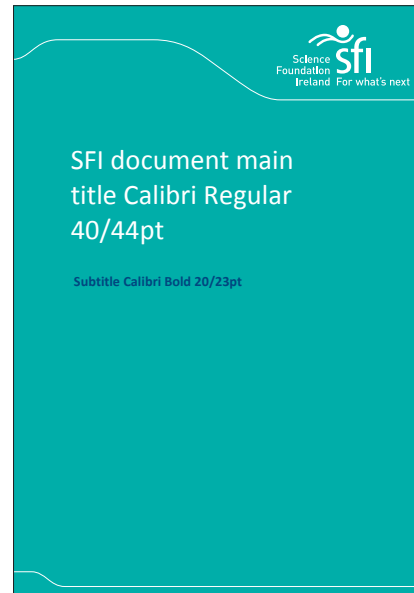


### Main titles

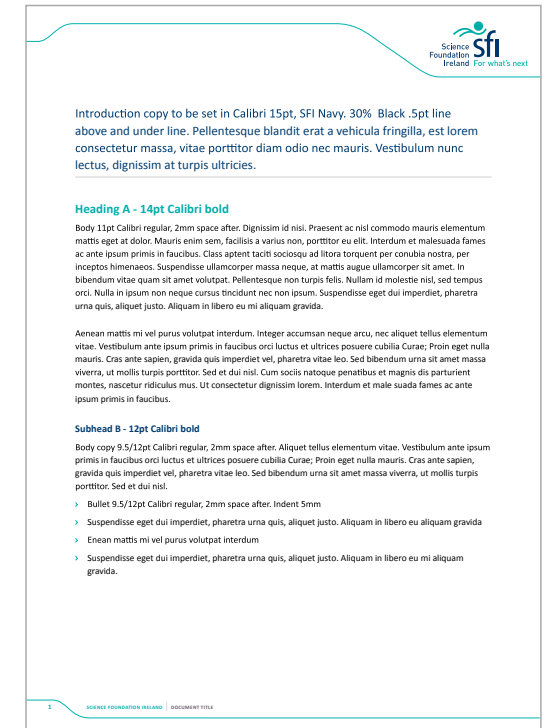
Calibri Regular 40/44pt ranged left

### Subtitle

Calibri Bold 20/23pt ranged left



## Word template internal pages



### Intro paragraph

Calibri 15pt ranged left – Dark blue

### Heading A

Calibri Bold 14pt – Teal

### Heading B

Calibri Bold 12pt – Dark blue

### Body copy

Calibri 11pt – Black

# Powerpoint templates

Science Foundation Ireland has developed a suite of Powerpoint templates for internal documents and presentations which are available for circulation. There is a range of colour choices for covers and interior slides that can be used to differentiate and set the tone for different presentations. A flexible cover template allows the user to update images to provide further distinction.

To ensure consistency throughout our document master templates must be used. The general specifications are as follows:

## Title slides

Calibri Bold 34pt ranged right  
 Subtitle Calibri Bold 16pt ranged right.

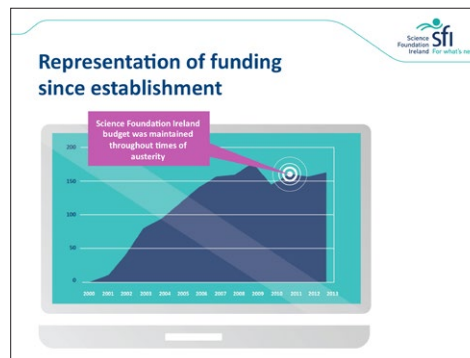
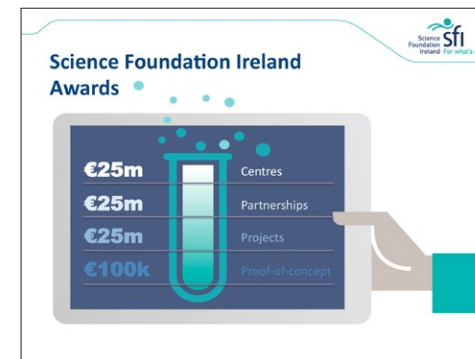
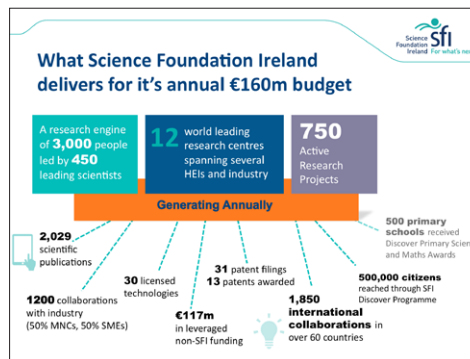
## Interior slides

Headings 34pt ranged left  
 Body text 18pt ranged left  
 Use SFI colour theme palette for colour usage throughout.

## Cover templates



## Interior page templates



# Email

To ensure consistency, Science Foundation Ireland require all outgoing emails to carry the approved signature.

## Email signatory general guidelines

Calibri 12pt ranged left – Colour Black  
 Name and title in Bold – use upright line (|) as divisor  
 Main telephone number appears first  
 Direct line number appears second

## Science Foundation Ireland

Calibri Bold 14pt ranged left – Colour: Dark blue

## Science Foundation Ireland taglines

### For what's next...

Calibri Bold 12pt ranged left  
 Colour: Teal  
 Allow one return space before and after

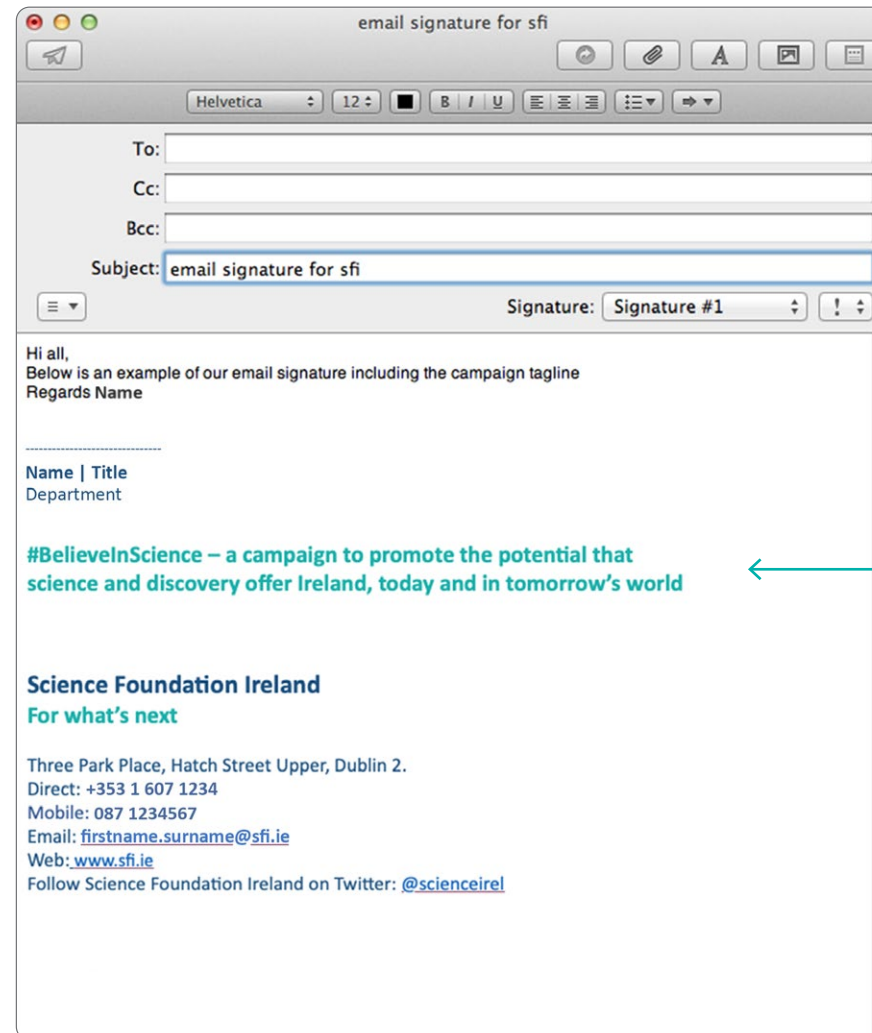
## Other divisional messages or news

Calibri Bold 14pt ranged left – Colour Black  
 Allow one return space before and after

## Disclaimer

Always use the Science Foundation Ireland official disclaimer  
 Arial 11pt ranged left – Colour Black  
 Arial used to create distinction from main body

## Email signatures



← Annual campaigns will be included in the email signature ('#Believe in Science' shown in this example)

# Stationery

## General guidelines for stationery Items

### Logo

Use dual language version of the logo

### Colour

All stationery items printed in two colours  
Dark blue and Teal

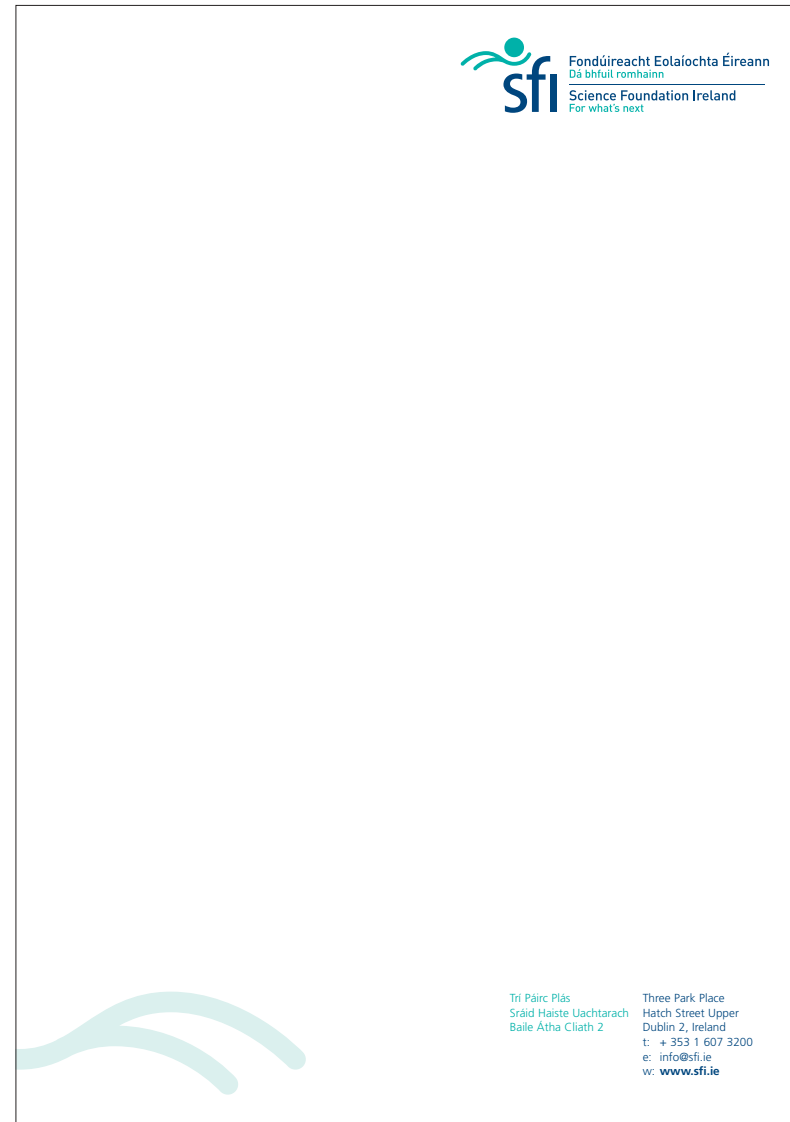
### Watermark

Watermark 'swish' to be reproduced  
in 15% Teal

### Letterhead

Use dual language version of the logo  
Source Sans Regular 9.5/12pt ranged left  
Web address – Calibri Bold 9.5/12pt range left  
English Address – Dark Blue  
Irish Address – Teal

## Letterhead





### Compliment slip

Use dual language version of the logo  
 Text as per letterhead  
 ‘With Compliments’ – Upper case

### Envelopes – DL and A4

Use dual language version of the logo

Source Sans Regular 9.5/12pt ranged left



# Banner and poster examples



Science Foundation Ireland For what's next

#Believe in Science

Science Foundation Ireland Research Centres

**Software**  
**Pharma**  
**Nanotechnology**  
**MEDICAL DEVICES**  
**Applied Geosciences**  
**Digital Content**  
**Telecommunications**  
**PERINATAL Energy**  
**RESEARCH Nano Materials**  
**Functional Foods**  
**FOOD FOR HEALTH**  
**BIG DATA**  
**Marine Renewable Energy**

Industry commitment of €190 million

€355 million from SFI















www.sfi.ie | @scienceirel



Science Foundation Ireland For what's next

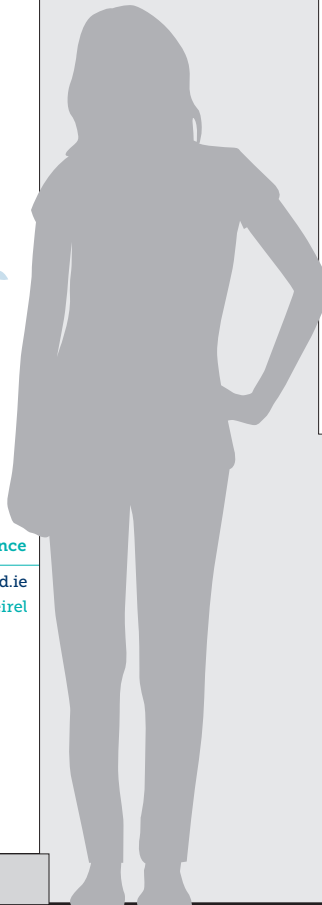
Ireland  
At the center of  
global scientific and  
engineering research




#Believe in Science

ScienceFoundationIreland.ie

@scienceirel





Science Foundation Ireland For what's next

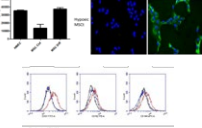
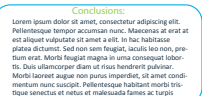
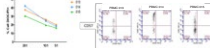
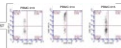
**SYSTEMS BIOLOGY IRELAND** Study heading and description

**Introduction:**  
Lorem ipsum dolor sit amet, consectetur adipiscing elit. Pellentesque tempor accumsan nunc. Maecenas at erat at est aliquet vulputate sit amet a elit. In hac habitasse platea dictumst. Sed non sem feugiat, lacus leo non, pretium erat. Morbi feugiat magna in urna consequat lobortis. Duis ullamcorper diam ut risus hendrerit pulvinar. Morbi laoreet augue non purus imperdiet, sit amet condimentum nunc suscipit. Pellentesque habitant morbi tristique senectus et netus et malesuada fames ac turpis egestas. Aenean malesuada augue est, ac facilis felis egestas sit amet. Sed luctus eu sem eget maximus. Praesent tristique faucibus ante non hendrerit. Curabitur quis tristique libero, vitae semper diam. Ut sollicitudin risus sed dictum porta. Vivamus trichitum eu in sagittis consectetur hendrerit vel non nunc. Interdum et malesuada fames ac ante ipsum primis in faucibus.

**Heading name**  
Lorem ipsum dolor sit amet, consectetur adipiscing elit. Pellentesque tempor accumsan nunc. Maecenas at erat at est aliquet vulputate sit amet a elit. In hac habitasse platea dictumst. Sed non sem feugiat, lacus leo non, pretium erat. Morbi feugiat magna in urna consequat lobortis. Duis ullamcorper diam ut risus hendrerit pulvinar. Morbi laoreet augue non purus imperdiet, sit amet condimentum nunc suscipit. Pellentesque habitant morbi tristique senectus et netus et malesuada fames ac turpis egestas. Aenean malesuada augue est, ac facilis felis egestas sit amet. Sed luctus eu sem eget maximus. Praesent tristique faucibus ante non hendrerit. Curabitur quis tristique libero, vitae semper diam. Ut sollicitudin risus sed dictum porta. Vivamus trichitum eu in sagittis consectetur hendrerit vel non nunc. Interdum et malesuada fames ac ante ipsum primis in faucibus.

**Results: Heading name 2**  
Lorem ipsum dolor sit amet, consectetur adipiscing elit. Pellentesque tempor accumsan nunc. Maecenas at erat at est aliquet vulputate sit amet a elit. In hac habitasse platea dictumst. Sed non sem feugiat, lacus leo non, pretium erat. Morbi feugiat magna in urna consequat lobortis. Duis ullamcorper diam ut risus hendrerit pulvinar. Morbi laoreet augue non purus imperdiet, sit amet condimentum nunc suscipit. Pellentesque habitant morbi tristique senectus et netus et malesuada fames ac turpis egestas. Aenean malesuada augue est, ac facilis felis egestas sit amet. Sed luctus eu sem eget maximus. Praesent tristique faucibus ante non hendrerit. Curabitur quis tristique libero, vitae semper diam. Ut sollicitudin risus sed dictum porta. Vivamus trichitum eu in sagittis consectetur hendrerit vel non nunc. Interdum et malesuada fames ac ante ipsum primis in faucibus.

**Conclusions:**  
Lorem ipsum dolor sit amet, consectetur adipiscing elit. Pellentesque tempor accumsan nunc. Maecenas at erat at est aliquet vulputate sit amet a elit. In hac habitasse platea dictumst. Sed non sem feugiat, lacus leo non, pretium erat. Morbi feugiat magna in urna consequat lobortis. Duis ullamcorper diam ut risus hendrerit pulvinar. Morbi laoreet augue non purus imperdiet, sit amet condimentum nunc suscipit. Pellentesque habitant morbi tristique senectus et netus et malesuada fames ac turpis egestas. Aenean malesuada augue est, ac facilis felis egestas sit amet. Sed luctus eu sem eget maximus. Praesent tristique faucibus ante non hendrerit. Curabitur quis tristique libero, vitae semper diam. Ut sollicitudin risus sed dictum porta. Vivamus trichitum eu in sagittis consectetur hendrerit vel non nunc. Interdum et malesuada fames ac ante ipsum primis in faucibus.



Science Foundation Ireland For what's next

**Excellence:**  
"Outstanding what we promise and exceeding expectations"

**Passionate:**  
"We genuinely care about every aspect of what we do and we really encourage you to challenge the organisation and our community"

**Integrity:**  
"We do the right thing"

**Collaborative:**  
"Working together for others in science. Working together for each other"

**Progressive:**  
"We are an innovative, dynamic and essential funding agency"

**Respect:**  
"We value everybody within and outside the organisation for their time, views and contributions to enhancing SFI science"

CORE VALUES

# Co-branding

There is a specific lock-up designed for using Science Foundation Ireland branding in conjunction with SFI Research Centres. SFI Research Centres should please refer to the **SFI Research Centre Branding Guidelines**. Contact the Communications team at [communications@sfi.ie](mailto:communications@sfi.ie) with any queries.

